

DID YOU KNOW?

There has been a shift in language preferences in the Autistic community



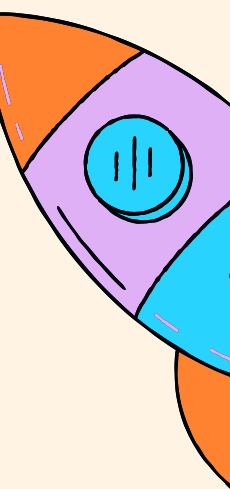
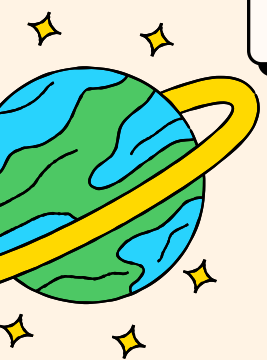
Identify first language

Formerly person first language had been used- Individual with Autism. The Autistic community is asking for identity first language-Autistic Individual. Autism is their core identity, not something (like a disease) that they will be cured of.

<http://www.autisticscholar.com/84-2/>

Symbol

With the evolution of our understanding of autism, we now know that each autistic student has different needs and experiences. The autistic community has advocated that they are not "missing pieces" or are "too puzzling" to fit into the community. The infinity symbol represents the neurodiversity movement and includes the neurological differences between both neurodivergent and neurotypical people.



Person
with
autism

Autistic
person



Neurology is not an accessory
www.identityfirstautistic.org

The Three Functional Levels of Autism

ASD Level 1
Requiring Support



difficulty initiating social interactions
organization and planning problems can hamper independence

verywell

ASD Level 2
Requiring
Substantial Support

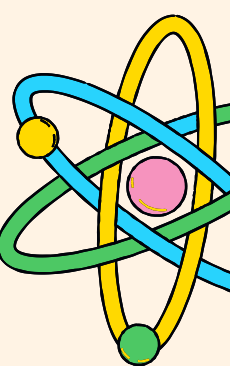


social interactions limited to narrow special interests
frequent restricted/repetitive behaviors

ASD Level 3
Requiring Very
Substantial Support



severe deficits in verbal and nonverbal social communication skills
great distress/difficulty changing actions or focus



Colour

Red is the new blue!

In an effort to distance themselves from some organizations, the Autistic community has shifted away from the color blue. There is a feeling that their visions may not fully align.

Appreciation Month

We must evolve from awareness to acceptance to appreciation! It is important as we become educated about neurodiversity to move along the pathway of understanding. First we became aware, then we accepted and now we appreciate the very special gifts, unique abilities and personalities of Autistics!



References

<https://drobertnaseef.wordpress.com/2019/10/10/person-first-vs-identity-first-language/>
<https://www.verywellhealth.com/what-are-the-three-levels-of-autism-260233>
<https://themighty.com/2021/04/support-autistics-during-autism-awareness-month/>
<https://youtu.be/haBENW96T5g>

